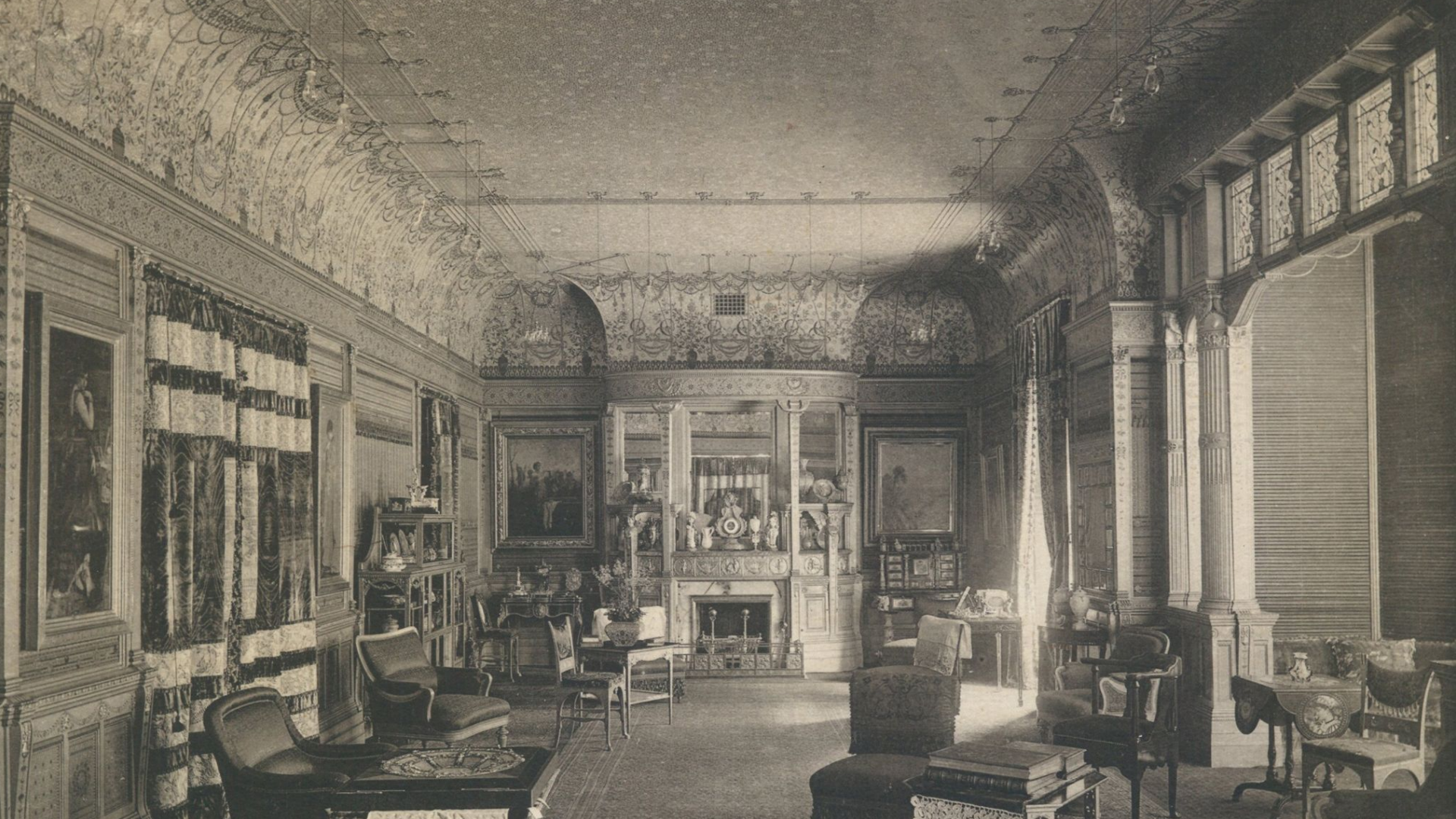




WiredScore





Software is eating the physical world

ALL DOMAIN, LAND WARFARE, NETWORKS & DIGITAL WARFARE

Palantir wins contract for Army TITAN next-gen targeting system

In December, an Army official called TITAN "one of the foundational elements from the intelligence modernization

By AARON MEHTA on March 06, 2024 at 6:59 AM



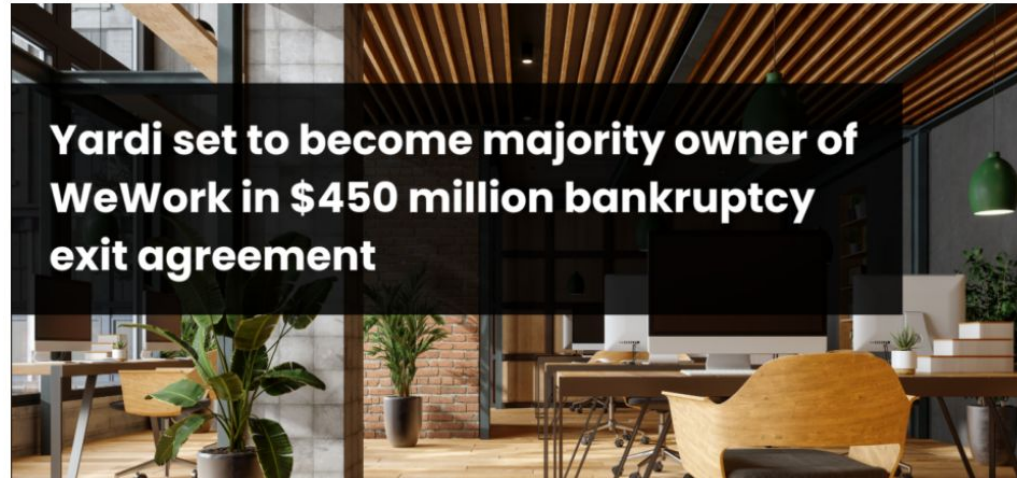
Art provided by Palantir of its TITAN system from the outside. (Palantir)

WASHINGTON — The US Army has awarded [Palantir](#) the right to produce a next-generation targeting node, known as [TITAN](#), the service announced today.

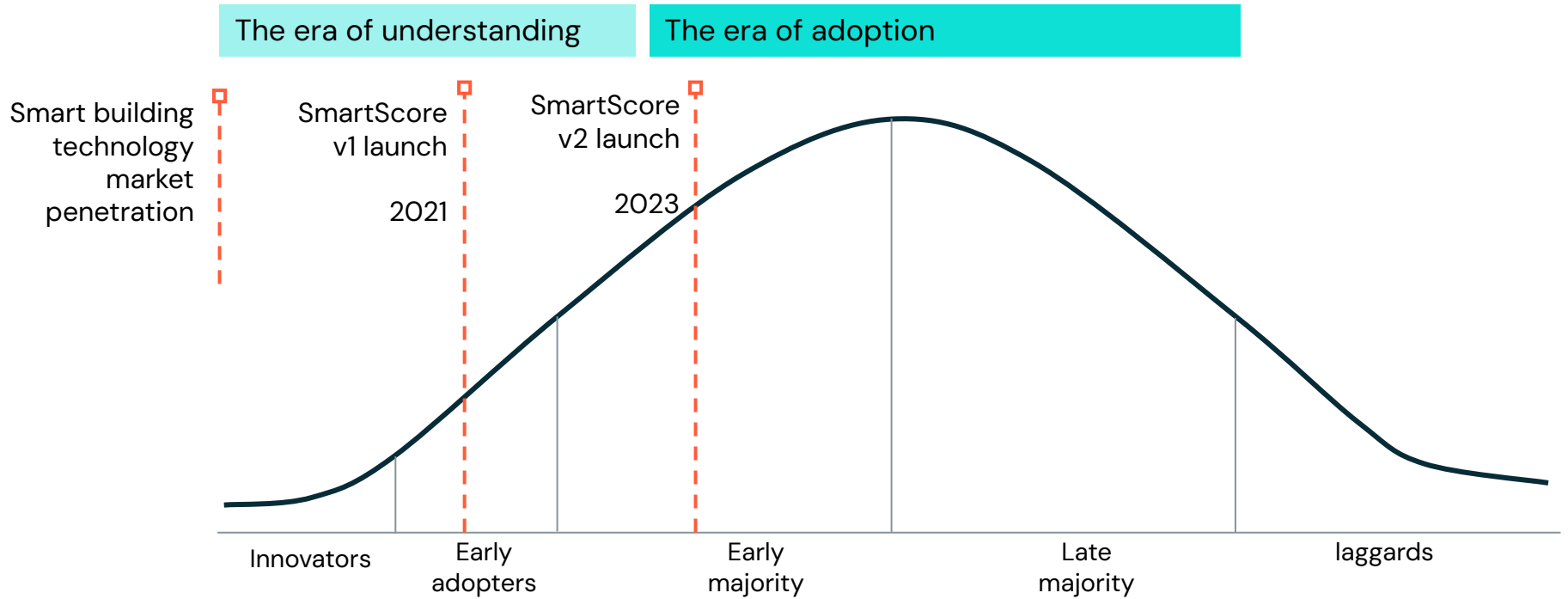
Home < News < [Yardi set to become majority owner of WeWork in \\$450 million bankruptcy exit agreement](#)

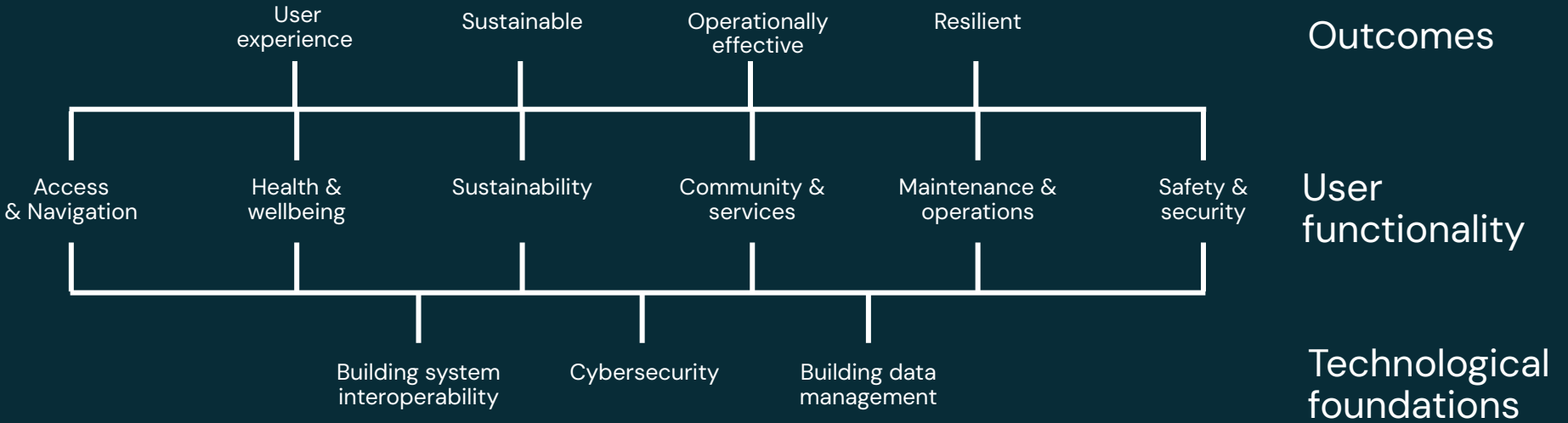
Yardi set to become majority owner of WeWork in \$450 million bankruptcy exit agreement

CREtech 4/30/2024



From the era of understanding to the era of adoption





SmartScore User Functionality Categories

UF1: Access and Navigation

UF1:1: Building access

UF1:2: Visitor experience

UF1:3: Inclusive wayfinding

UF1:4: Elevator optimization

UF2: Health and Wellbeing

UF2:1: Air quality

UF2:2: Wellbeing reporting

UF2:3: Occupier comfort control

UF2:4: Comfort optimization

UF3: Sustainability

UF3:1: Energy management

UF3:2: Water management

UF3:3: Waste management control

UF3:4: Operational carbon

UF3:5: Embodied carbon

UF4: Communities and Services

UF4:1: Local events and services

UF4:2: Delivery management

UF4:3: Amenity space booking

UF4:4: EV charging

UF5: Maintenance and Operations

UF5:1: Building cleaning

UF5:2: Work order management

UF5:3: Fault Detection and Diagnosis (FDD)

UF5:4: Cost-effective maintenance

UF6: Safety and Security

UF6:1: Building security

UF6:2: Building utilization

UF6:3: Emergency alerts

UF6:4: Third party access

SmartScore Technology Stack

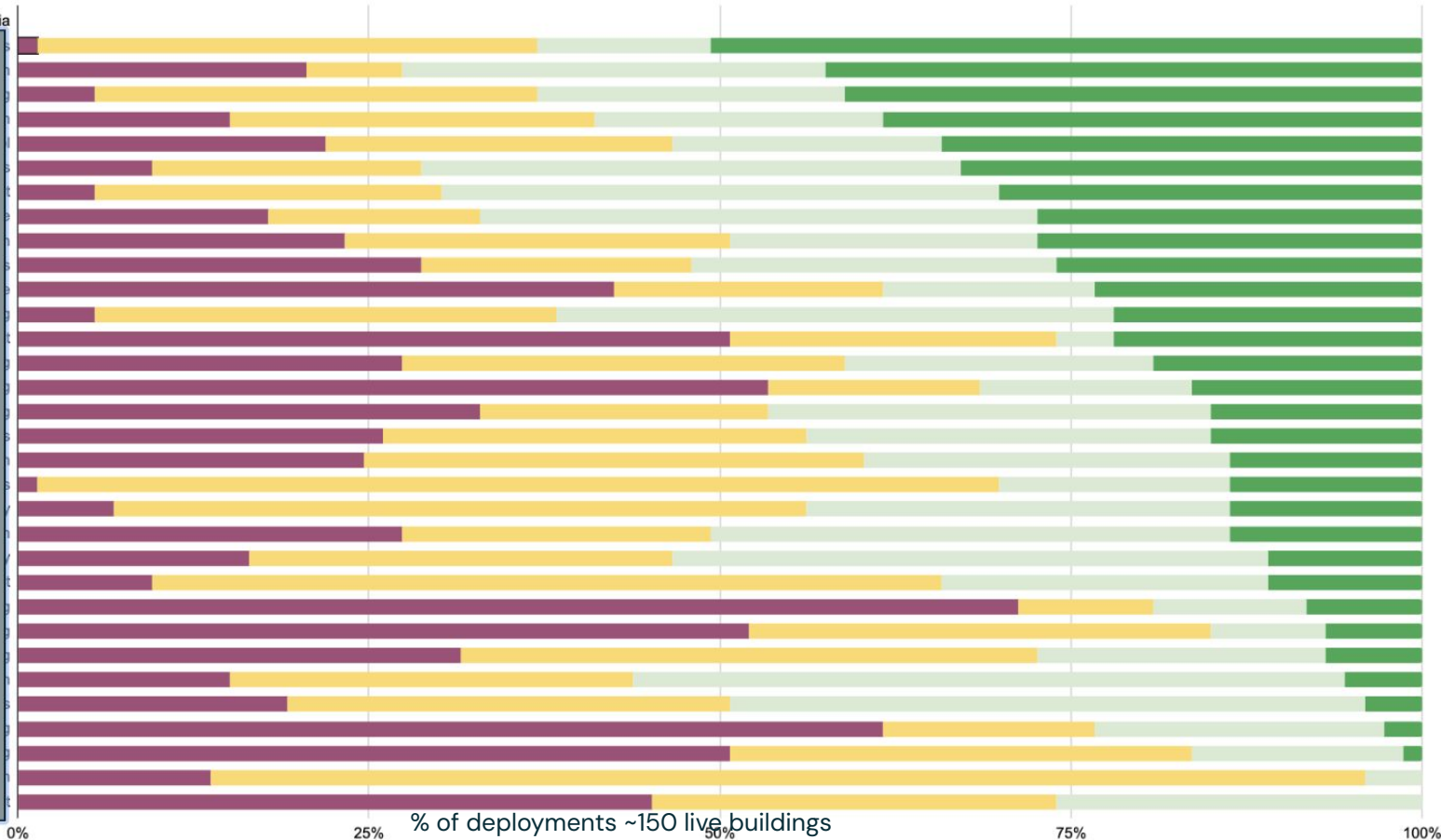
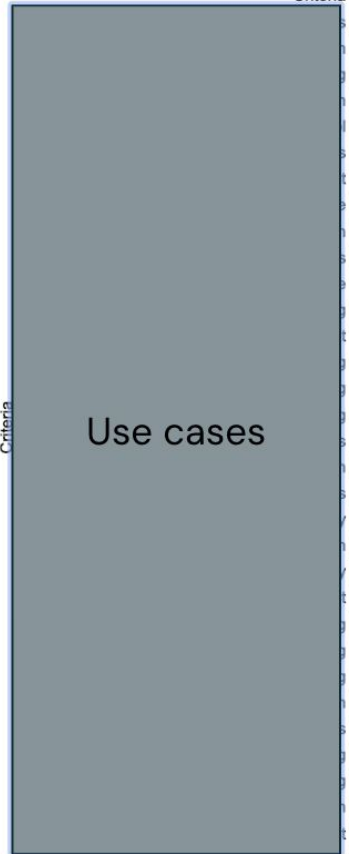


A ranking of the maturity of use cases within SmartScore buildings

Least mature Most mature

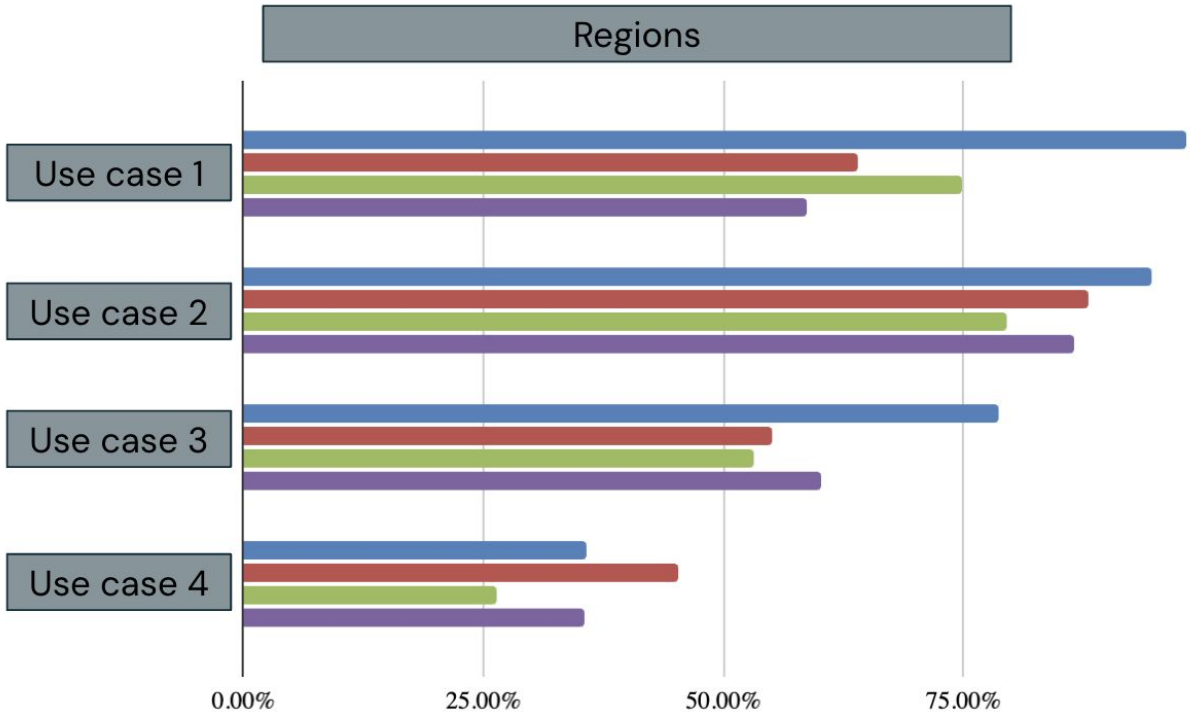


Criteria



% of deployments ~150 live buildings

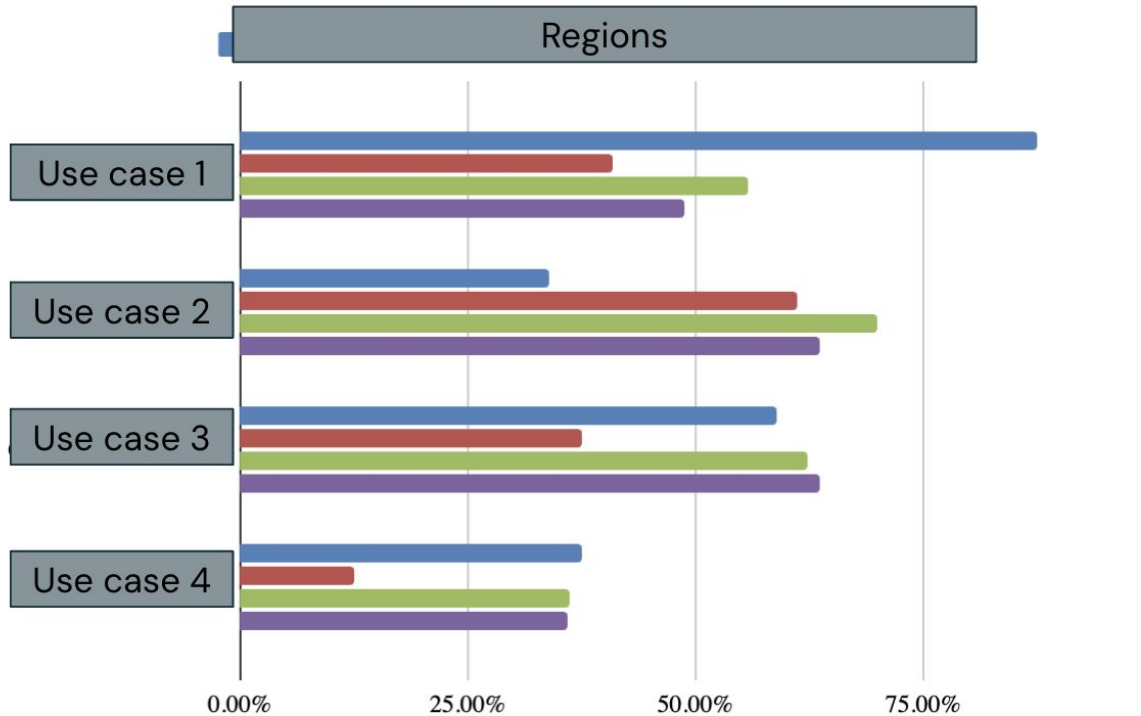
Access and Navigation



What we are seeing

- There has been significant adoption of access control solutions, with now portfolio-wide deployments of digital access across regions.
- Location services, such as “Wayfinding” and “Person Locating”, are not standard and increasingly rare.
- APAC consistently scores high across all use cases, suggesting advanced implementation in AAA buildings.

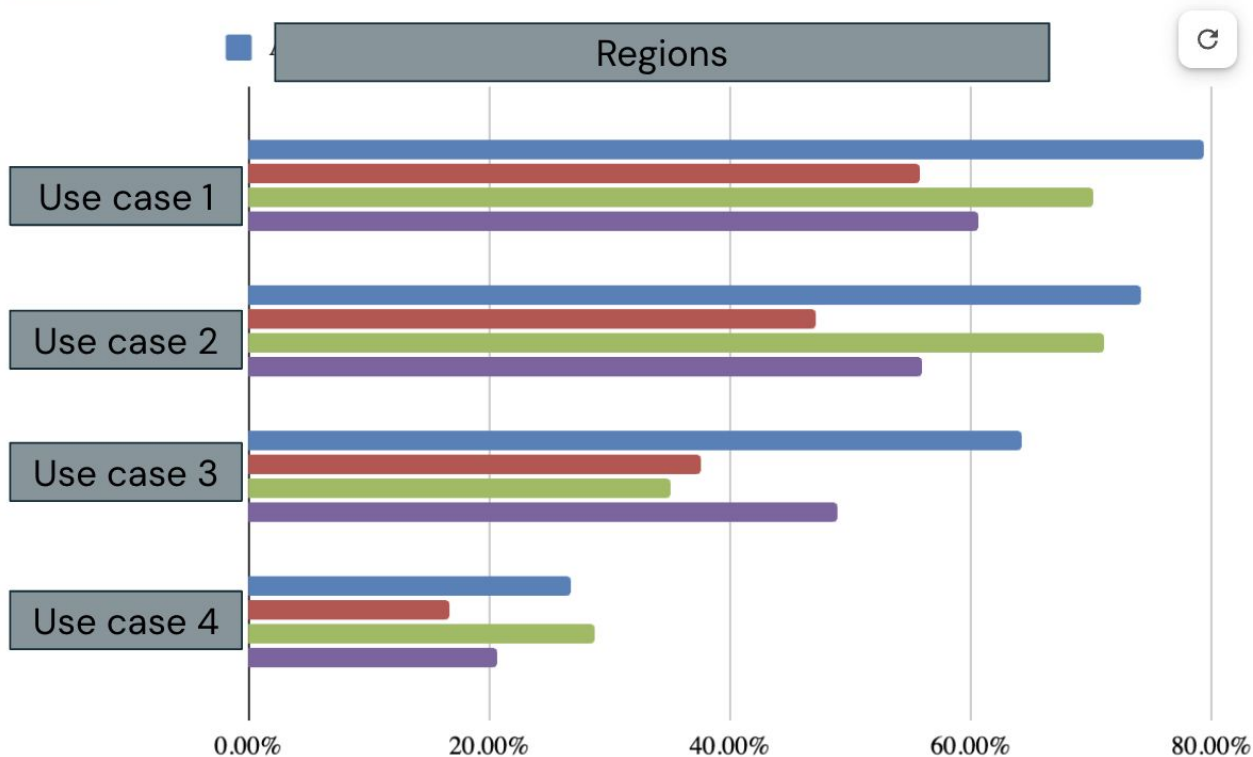
Health and Wellbeing



What we are seeing

- APAC is outperforming the market on IAQ data, however falls behind when it comes to allowing tenants to take control of HVAC conditions.
- Landlords are hesitant of disclosing wellbeing data to occupiers.

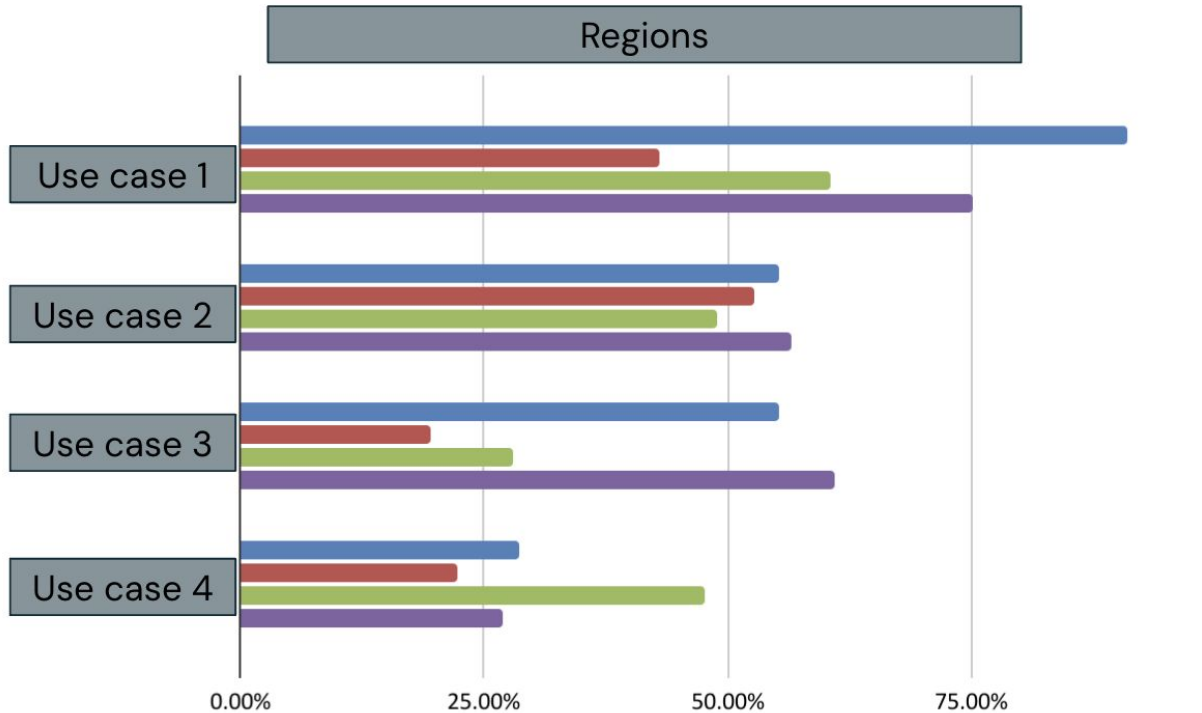
Sustainability



What we are seeing

- Energy metering data is becoming more widely available, closely followed by other utilities - typically at a floor-by-floor level of granularity of greater.
- Carbon monitoring remains much less adoption - only 20% of assets.

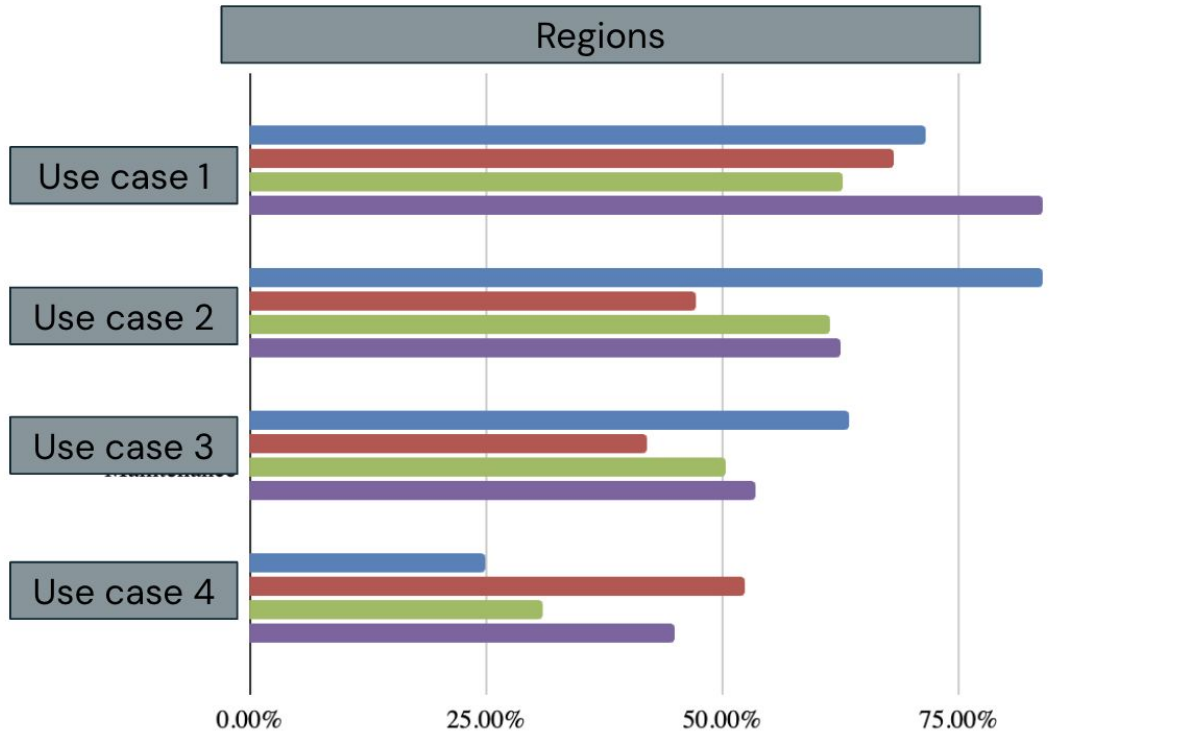
Community and Services



What we are seeing

- There is increasingly wide adoption of tenant applications with core functionality only, including access to room book and additional local services.
- There is less integration of tenant apps with EV charging stations or delivery solutions.

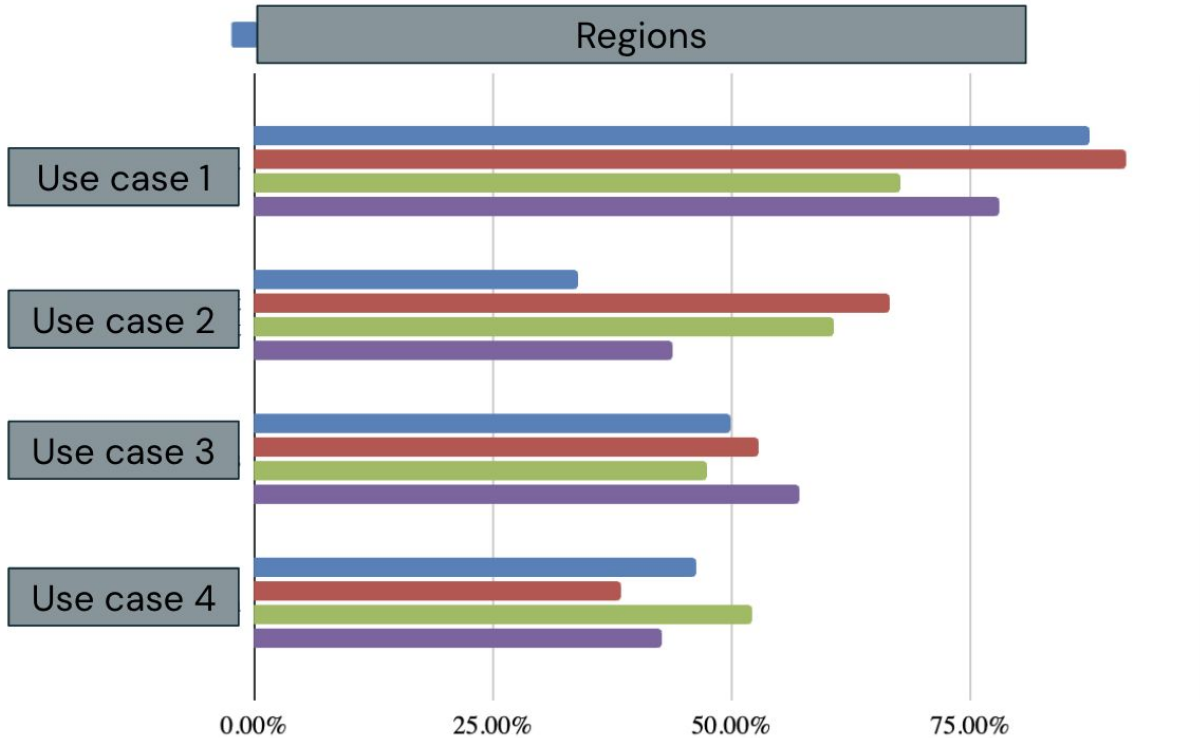
Maintenance and Operations



What we are seeing

- Digital work order / help desk systems considered to be essential in all markets.
- Many buildings don't yet have digitized cleaning management systems, missing opportunities around demand-based cleaning.

Safety and Security



What we are seeing

- All markets believe it is important to invest in building security features to ensure occupant safety.
- Space utilization is an emerging technology that some buildings are starting to experiment with, but it has not seen wide adoption yet.
- The digitization of work permit and emergency management is also in its early stages.



WiredScore